

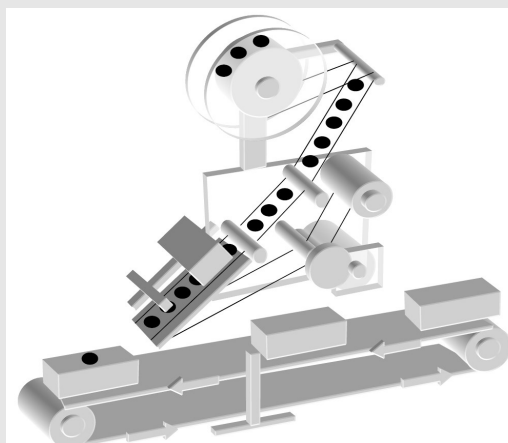
LMC-200-G150(G280) LABELING MOTION CONTROLLER

“A plug & play fully integrated motion control unit for label dispensing machines ...”

- Mains operated 100...240V_{AC} PFC (Power Factor Control) >0.95
- High dispensing speeds achievable due to regulated motor voltage 48V_{DC} (G150) or 72V_{DC} (G280) for 2-phase stepper motors ($I_{PHASE} \leq 8A_{PEAK}$)
- Synchronous (product speed tracking) and asynchronous (fixed dispensing speed) modes
- Auto-Teach Mode determines automatically label size and pitch and Auto-Skip (missing label queuing)
- 20 storable label recipes
- On board 24V/750mA power source for sensor supply and peripheral system control
- RS232 DUB 9 interface for remote parameter access
- Triple alert light control
- Auxiliary outputs to control peripheral devices (e.g. imprinter)
- 9 selectable user languages
- W:120mm H:160mm D:130mm D:200mm w. plugged connectors
- For options see back page



... combining an industrial quality high speed motion controller/stepper drive with a user friendly HMI interface ...



... for the automation of label dispensing applicators.
Typical maximum web speeds:
G150: up to ca. 2000"/min*
G280: up to ca. 3000"/min**

* depending on mechanical machine design (loads, rollers, gearing etc.)

BLACK FOREST LINK..

... combines industrial high performance stepping motor drive and control systems with pre-engineered functionality for a variety of demanding applications...

...systems offer user friendly solutions for a variety of industries:

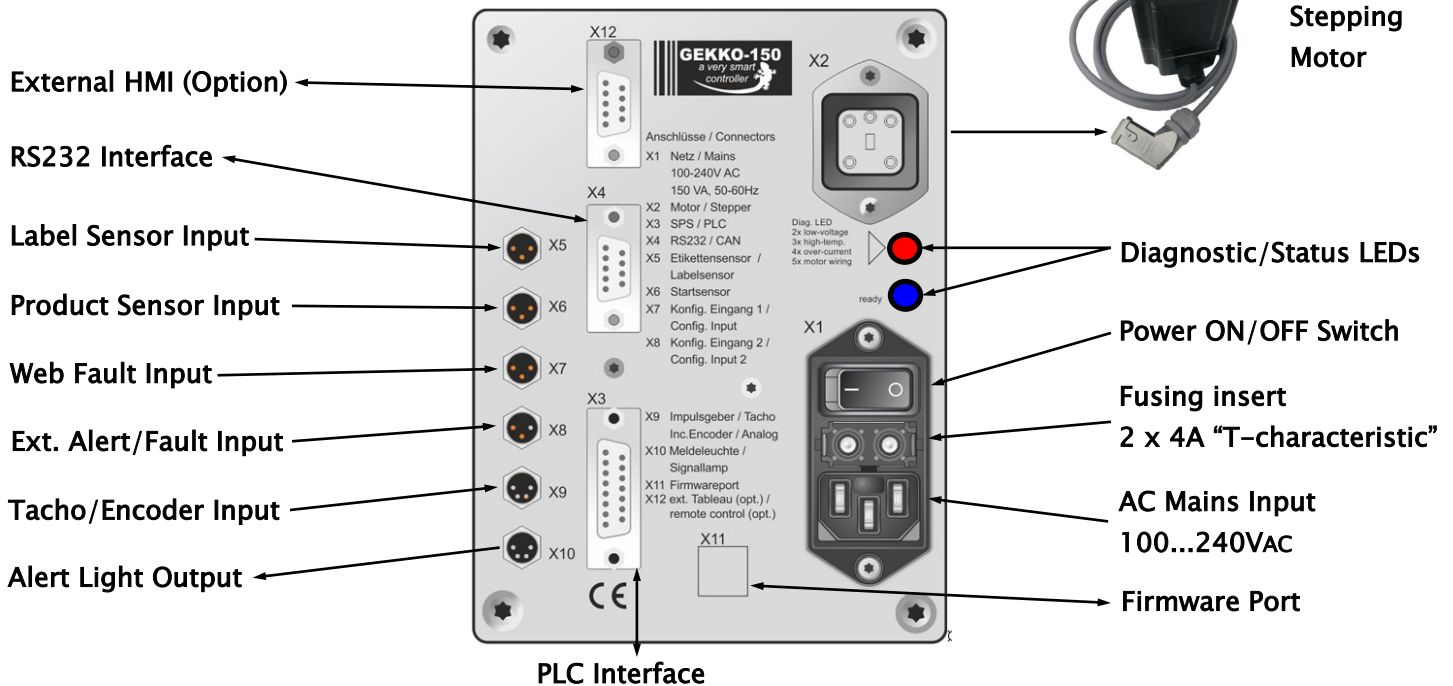
- Packaging
- Printing
- Labeling
- Automotive
- Food
- Medical
- Pharmaceutical
- ...

1 YEAR WARRANTY on standard products...

Please visit us at..
www.blackfoli.com

LMC-200-G150-G280-US0.3

LMC-200 Interfaces (device back plate)



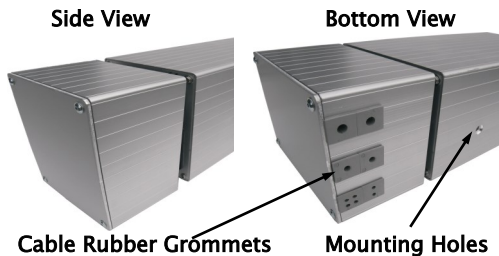
LMC-200 Standard Options (other customization upon request)

Remote HMI



LMC-200 with aluminum blind plate
front cover including cooling fan
and remote external HMI
HMI terminal dimensions
W: 122mm H:160mm D:32mm

IP54 Protection Hood



"Plug & Play"

Stepping Motor

Pre-wired
High Performance
2 Phase or 3 Phase
IP54 rated motors
2m shielded cable

280 Watt rated LMC-200-G280

Compared with LMC-200-G150
(150 Watt rated):

- LMC-200-G280 is the more powerful "twin brother" with 280 Watt rating
- 72Vdc motor voltage instead of 50Vdc
- Maintenance free device internal cooling fan
- Up to 3000"/min* dispensing speed
- Identical dimensions and functionality

* depending on mechanical machine design
(loads, rollers, gearing etc.)

LMC-200-G150-G280-US0.3